

Technical Manual

DD67000



ACOUSTIC & ELECTRICAL SPECIFICATIONS:

- Nominal Impedance 8 ohms
- Max Amp Power 250 watts*
- Frequency Response 30Hz – 60kHz (-6dB)
- Sensitivity 96dB (2.83V@1m)
- Crossover Frequencies 180Hz, 850Hz, 20kHz

SYSTEM COMPONENTS:

- Grille See Packaging List
- Low-Frequency Transducer 1501Al-2 x 2
Size 15" (381mm)
DC Resistance 9.2 ohms
- High-Frequency Transducer 476Be
Size 4" (102mm)
DC Resistance 8 ohms
- Ultrahigh-Frequency Transducer 045Be-1
Size 1" (25mm)
DC Resistance 3.15 ohms
- Crossover Network(s) 400-0477-001 (LF1)
400-0477-002 (LF2)
400-0477-003 (HF)
400-0477-004 (UHF)

AURAL SWEEP TEST SPECIFICATIONS:

- System Aural Sweep Test: 6V 20Hz-20kHz
- L.F.1 Aural Sweep Test: 20V 20Hz-1.6kHz
- L.F.2 Aural Sweep Test: 20V 20Hz-1.6kHz
- H.F. Aural Sweep Test: 1.2V 100Hz-1kHz
- U.H.F Aural Sweep Test: 1.2V 4kHz-20kHz

PHYSICAL SPECIFICATIONS:

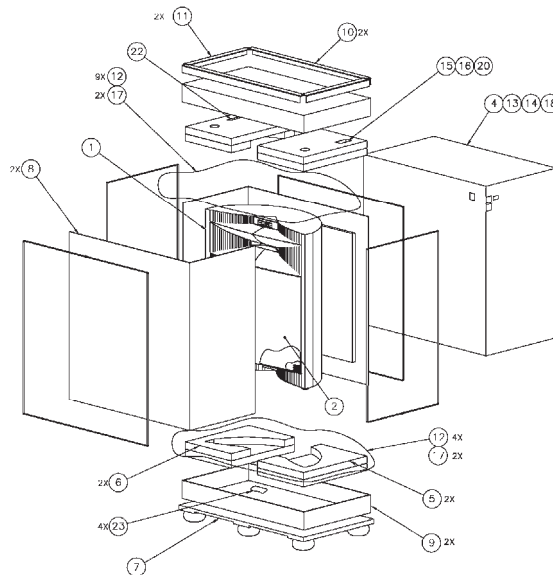
- Dimensions (H x W x D) 38"W x 43.75"H x 18.25"D
(965cm x 1111mm x 464cm)
- Weight 300 lbs (136.078kg) each

WARRANTY:

- Refer to Warranty Statement packed with each product.

* The maximum recommended amplifier power rating will ensure proper system headroom to allow for occasional peaks. We do not recommend sustained operation at these maximum power levels.

PACKAGING



Item	Part Number	Description
1	060-0635-001	ASY, SPKR - DD67000MA
	060-0635-002	ASY, SPKR - DD67000RW
2	130-0127-002	ASY, GRL, WHT - DD67000MA
	130-0127-001	ASY, GRL, BLK - DD67000RW
4	900-0901-001	CTN, MSTR - DD67000
5	362914-003	PAD, TL/BR, DD66000
6	362914-004	PAD, TR/BL, DD66000
7	362915-002	PACKING, PALLET, DD66000
8	362917-001	SLEEVING, PACKAGE, WITH FOAM, DD66000
9	362921-001	PACKING, TRAY, DD66000
10	335692-002	CORNER, PROTECTIVE, 45", IL50
11	335692-005	CORNER, PROTECTIVE, 24", DD66000
12	72298	FABRIC, 24" X 36", POLYESTER FIBER CLOTH

Qty	Unit
1	EA
1	EA
1	EA
1	EA
1	EA
1	EA
1	EA
1	EA
2	EA
2	EA
2	EA
2	EA
2	EA
13	EA

Item	Part Number	Description
13	920-0761-002	LABEL, UPC BARCODE, JBL PASSIVE SPEAKER, DD67000MA
	920-0761-003	LABEL, UPC BARCODE, JBL PASSIVE SPEAKER, DD67000RW
14	303611-2072	BARCODE LABEL, DD67000MA
	303611-2073	BARCODE LABEL, DD67000RW
15	338067-004	FOOT, SPIKE, SPEAKER, K2S9800
16	338067-005	FOOT, BASE, FLOOR-K2S9800
17	49790P	MICROFOAM, .062THK, 20" X 18" SHEETS
18	65012-01	TAPE, 3", CLEAR
20	9551108-001	BAG, PLASTC, 4X4"
21	330150-001	STRAP, CLEAR, 3/8"WIDE
22	363207-001	DRIVER, HEX, 5/32, DD66000
23	354868-001	DESICCANT, 8 UNIT

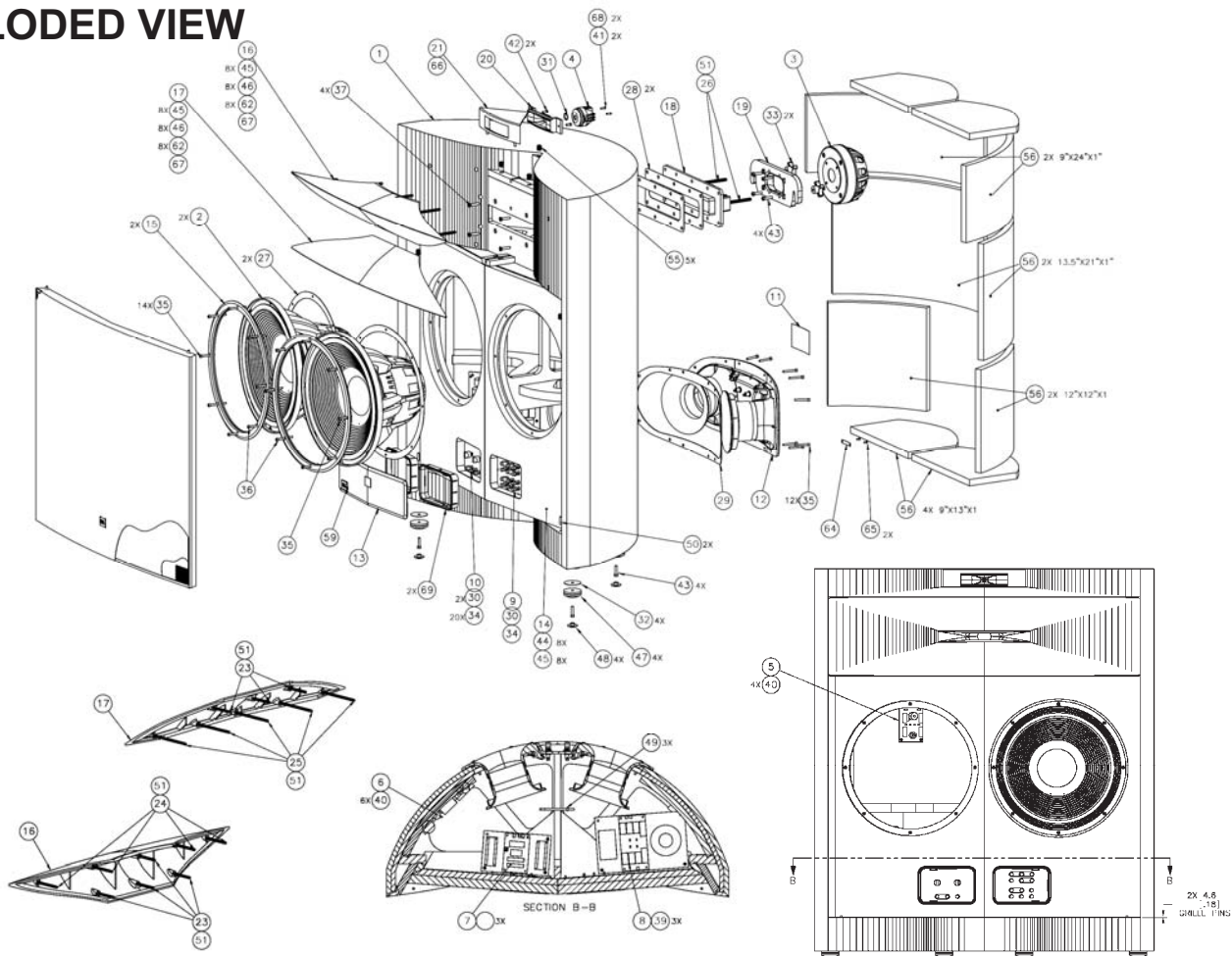
Qty	Unit
1	EA
1	EA
1	EA
1	EA
4	EA
4	EA
4	EA
4	EA
20	EA
2	EA
57	EA
1	EA
4	EA

Technical Manual

DD67000



EXPLODED VIEW



Item	Part Number	Description	Qty	Unit	Item	Part Number	Description	Qty	Unit
1	123-0021-001	ASY, CAB, FNSH-DD67000MA	1	EA	34	883-11110-16	SCREW, 8 X 1, FLT, PH, PB, BLK ZINC, LCS	20	EA
	123-0021-002	ASY, CAB, FNSH-DD67000RW	1	EA	35	804-73114-24	SCR, 10-32 X 1 1/2,SKT,HEX,AL-2000 BLK	14	EA
2	320-0050-001	ASY, WFR - 1501AL-2	2	EA	36	804-73114-32	SCREW, 10-32X2, SKT, HEX, AL-2000, BLACK	14	EA
3	362733-001	ASY, XDCR, 476BE	1	EA	37	806-11010-20	SCREW, 1/4-20 X 1 1/4, FLT, PH, UNCO, BLK ZNC, L	4	EA
4	362366-002	ASY, TWTR, UHF - 045BE-1,MG PHSNG	1	EA	39	883-41110-16	SCREW, 8 X 1, PAN, PH, PB, BLK ZINC, LCS	6	EA
5	400-0477-004	XOVER, UHF - DD67000	1	EA	40	882-41110-10	SCR, 6 X 5/8,PAN,PH,PB,BLK ZINC,LCS	10	EA
6	400-0477-003	XOVER, HF - DD67000	1	EA	41	802-41010-08	SCREW, 6-32 X 1/2, PAN, PH, BLK ZINC, LCS	2	EA
7	400-0477-001	XOVER, LF1-DD67000	1	EA	42	804-41110-08	SCR, 10-32 X 1/2,PAN,PH,BLK ZINC,LCS	2	EA
8	400-0477-002	XOVER, LF2 - DD67000	1	EA	43	806-01000-16	SCREW, 1/4-20 X 1, FIL, PH, CLR ZINC, LCS	8	EA
9	400-0484-001	BD, CTRL, LF - DD67000	1	EA	44	806-93014-22	SCREW, 1/4-20 X 1 3/8, BTN, SCTK, BLK ZNC, ALLO	8	EA
10	400-0484-002	BD, CTRL, HF - DD67000	1	EA	45	844-01110-07	WASHER, 1/4, SAE, REG, BLK ZINC, LCS	24	EA
11	362906-003	NPL - DD67000	1	EA	46	834-30010-00	NUT, 1/4-20, KEPS, BLK ZINC, LCS, RIGHT	16	EA
12	110-0108-002	ASY, PTB/TERM - DD67000	1	EA	47	338067-002	FOOT, BASE, SPEAKER, K2S9800	4	EA
13	362685-002	COVER, PANEL, CASTING, FINISHED, DD66000	1	EA	48	338067-003	FOOT, SLID, SPEAKER, K2S9800	4	EA
14	123-0021-006	BAFFLE, CARBON FIBER FNSH - DD67000	1	EA	49	884-41100-12	SCREW, 1/0 X 3/4, PAN, PH, PLR, CZ, LCS	3	EA
15	361865-002	RING, TRIM, 15", PAINTED, DD66000	2	EA	50	66066-01	PIN, GRILLE, 7/8, LONGSTEEL, BLACK	2	EA
16	361795-005	LIP, HORN, UPPER, PAINTED, DD66000	1	EA	51	352034-001	LOCITITE 2760, PERMANENT THREAD LOCK, RED	0,020	EA
17	361795-006	LIP, HORN, LOWER, PAINTED, DD66000	1	EA	52	333361-001	ADHESIVE, JET MELT, 3796PG	0,020	EA
18	361790-004	THROAT, HORN, PNT - DD65000/DD67000	1	EA	53	63062	CAULK, STRIP, BLACK	0,150	EA
19	361796-001	ADAPTER, THROAT, RAW, DD66000	1	EA	55	333249-001	CUP, GRILLE, HLS/STUDIO II SERIES	5	EA
20	361861-002	HORN, UHF, PAINTED, DD66000	1	EA	56	22389P	FIBERGLASS, 1 X 72", ROLL	12,250	EA
21	361899-004	HOUSING, UHF, PAINTED - DD65000/DD67000	1	EA	57	75439	TIE WRAP,RTM-675	3	EA
23	362625-001	STUD, THREADED, 1/4-20X3.0", DD66000	7	EA	58	35353S	CABLE, TIE, NYLON	5	EA
24	362625-002	STUD, THREADED, 1/4-20X3.5", DD66000	4	EA	59	362682-001	ASY, LOGO, DD66000	1	EA
25	362625-003	STUD, THREADED, 1/4-20X5.5", DD66000	5	EA	60	72266	ADHESIVE, SICOMET, 5181	0,003	OZ
26	362627-001	STUD, THREADED, 5/16-18X3.0", DD66000	2	EA	62	830-0035-001	WSHR, FLAT, BLK, RUBBER, 1/2"X1/2"ODX.09"THK	16	EA
27	338073-001	GASKET, DRIVER,15", K2S9800	2	EA	64	363359-003	NAMEPLATE, SERIAL NUMBER - DD67000	1	EA
28	362063-001	GASKET, THROAT, DD66000	2	EA	65	862-41210-08	SCREW, 6 X 1/2, PAN, PH, TYPE AB, BLK CZ, LCS	2	EA
29	362065-001	GASKET, PORT TUBE/TERMINAL, FLANGE, DD66000	1	EA	66	338166-001	GASKET, UHF, TOP, K2S9800	1	EA
30	362740-001	GASKET, CONTROL BOARD, CABNET, DD66000	2	EA	67	363469-001	PAD, DAMPING, HORN, EVEREST II DD66000	2	EA
31	339976-001	GASKET, UHF, K25800	1	EA	68	338536-001	GASKET, WASHER, .312 X .156", K2S9800	2	EA
32	338168-001	GASKET, FOOT, K2S9800	4	EA	69	190-0808-001	BEZEL - DD65000/DD67000	2	EA
33	362848-001	KNOB, 5/16-18, FEMALE, DD66000	2	EA					

8500 Balboa Blvd. Northridge, CA 91329 USA
Features, specifications and appearance are subject to change without notice.

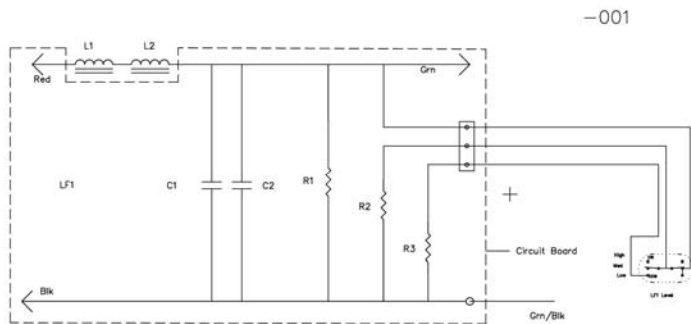
12/2012

Technical Manual

DD67000



SCHEMATIC



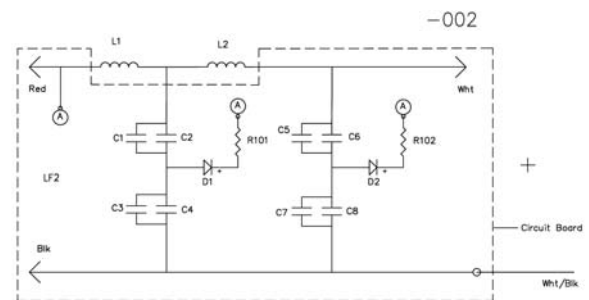
L1 - 9 mH \pm 5%, Iron Core, DCR $< 0.6 \frac{1}{2}$, Saturation > 7 A, Hysteresis $< 2\%$
 L2 - 9 mH \pm 5%, Iron Core, DCR $< 0.6 \frac{1}{2}$, Saturation > 7 A, Hysteresis $< 2\%$

C1 - 62 μ F \pm 5%, 100 V NPE, DF $< 4\%$
 C2 - 6.2 μ F \pm 5%, 250 V Solen

R1 - 200 ohm \pm 5%, 10 Watt, Metal standoff legs
 R2 - 200 ohm \pm 5%, 10 Watt, Metal standoff legs
 R3 - 200 ohm \pm 5%, 10 Watt, Metal standoff legs

LF1 Level Switch Connector - 3 pin circuit board connector (male)

Wire harness - 20 ga OFC, 7', from 2-Pole, 3 position rotary switch (LF1 Switch)

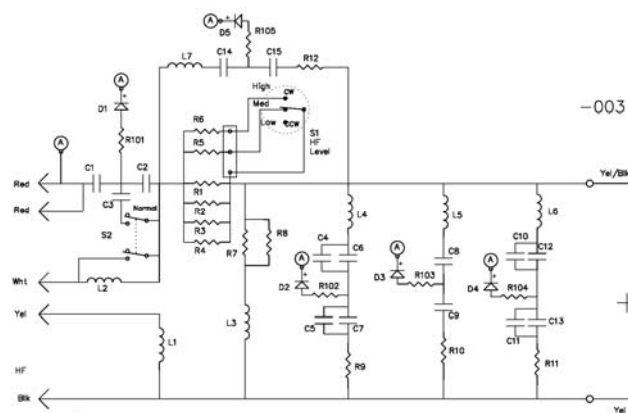


L1 - 4.2 mH \pm 5%, Air Core, DCR $< 0.6 \frac{1}{2}$, $\epsilon 1.8$
 L2 - 3.8 mH \pm 5%, Air Core, DCR $< 0.55 \frac{1}{2}$, $\epsilon 1.8$

C1, C3 - 62 μ F \pm 5%, 100 V NPE, DF $< 4\%$
 C2, C4 - 3.9 μ F \pm 5%, 250 V Solen
 C5, C7 - 36 μ F \pm 5%, 100 V NPE, DF $< 4\%$
 C6, C8 - 3.9 μ F \pm 5%, 250 V Solen

D1, D2 - 1N4935

R101, R102 - 10 kohm \pm 10%, 1/4 W, Metal or Carbon Film



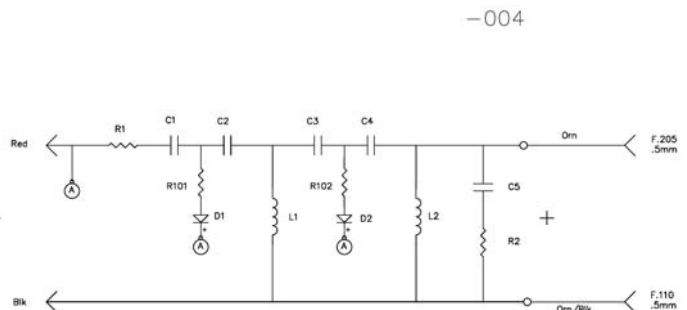
L1 - 1.3 mH \pm 5%, Air Core, DCR $< 0.4 \frac{1}{2}$
 L2 - 0.3 mH \pm 5%, Air Core, DCR $< 0.3 \frac{1}{2}$
 L3 - 0.16 mH \pm 5%, Air Core, DCR $< 0.25 \frac{1}{2}$
 L4 - 1.4 mH \pm 5%, Air Core, DCR $< 0.6 \frac{1}{2}$
 L5 - 3.0 mH \pm 5%, Air Core, DCR, 2.0 $\frac{1}{2}$ - 3.0 $\frac{1}{2}$
 L6 - 0.18 mH \pm 5%, Air Core, DCR $< 0.3 \frac{1}{2}$
 L7 - 0.1 mH \pm 5%, Air Core, DCR $< 0.15 \frac{1}{2}$

C1, C2 - 47 μ F \pm 5%, 250 V Solen
 C3 - 18 μ F \pm 5%, 250 V Solen
 C4, C5 - 82 μ F \pm 5%, 100 V NPE, DF $< 4\%$
 C6, C7 - 3.9 μ F \pm 5%, 250 V Solen
 C8, C9 - 10 μ F \pm 5%, 250 V Solen
 C10, C11 - 75 μ F \pm 5%, 100 V NPE, DF $< 4\%$
 C12, C13 - 3.0 μ F \pm 5%, 250 V Solen
 C14, C15 - 2.0 μ F \pm 5%, 250 V Solen

R1, R2, R3, R4 - 36 ohm \pm 5%, 5 W Metal Oxide Film
 R5 - 110 ohm \pm 5%, 5 W Metal Oxide Film
 R6 - 56 ohm \pm 5%, 5 W Metal Oxide Film
 R7, R8 - 12 ohm \pm 5%, 5 W Metal Oxide Film
 R9 - 1.0 ohm \pm 5%, 5 W Metal Oxide Film
 R10 - 3.6 ohm \pm 5%, 5 W Metal Oxide Film
 R11 - 1.8 ohm \pm 5%, 5 W Metal Oxide Film
 R12 - 20 ohm \pm 5%, 5 W Metal Oxide Film
 R101, R102, R103, R104, R105 - 10 kohm \pm 10%, 1/4 W, Metal or Carbon Film

D1, D2, D3, D4, D5 - 1N4935

S1(HF Level) - 1 Pole, 3 Position Rotary switch, Shaft for Knob (6 mm) Top of knob must be less than 0.95" from top of mounting board.
 S2 - 2 Pole 2 position. Can be circuit board mount slide or rotary. Can be done with Molex type jumper if possible.



L1 - 0.024 mH \pm 5%, Air Core, DCR $< 0.15 \frac{1}{2}$
 L2 - 0.062 mH \pm 5%, Air Core, DCR $< 0.25 \frac{1}{2}$

C1, C2 - 2.0 μ F \pm 5%, 250V Solen
 C3, C4 - 2.4 μ F \pm 5%, 250V Solen
 C5 - 0.47 μ F \pm 5%, 100V Polypropylene

R1 - 0.47 ohm \pm 5%, 1 W Metal Oxide Film
 R2 - 8.2 ohm \pm 5%, 0.5 W Metal Oxide Film
 R101, R102 - 10 kohm \pm 10%, 1/4 W, Metal or Carbon Film

D1, D2 - 1N4935

Technical Manual

DD67000



WIRING DIAGRAM

