

LTH102

1" Elliptical Tractrix

NOMINAL SPECIFICATIONS

Type	Elliptical Tractrix
Throat Diameter	25.4 mm (1 in)
Frequency Range	0.8÷20 kHz
Recommended Crossover Freq.	1 kHz
Horizontal Nominal Coverage (-6dB)	60°
Vertical Nominal Coverage (-6dB)	50°
Directivity Index	9.5 dB
Material	Al
Mouth Height	189 mm (7.44 in)
Mouth Width	235 mm (9.25 in)
Depth	171.6 mm (6.76 in)
Mouth Mounting Holes (4x)	6.5 mm (0.26 in)
Net Weight	1.2 kg (2.65 lb)
Shipping Box (Single Carton Box)	268 x 207 x 185 mm (10.6 x 8.2 x 7.3 in)
Shipping Weight	1.45 kg (3.20 in)
NET Air Volume filled by HF Horn	1.1 dm ³ (0.039 ft ³)



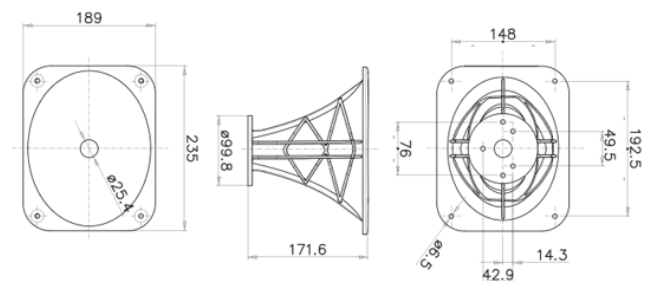
PART NUMBER

Part Number	TR390103
-------------	----------

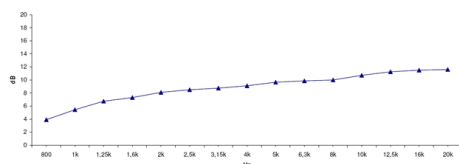
NOTES:

Sold only in combination with a FaitalPRO 1" HF Driver

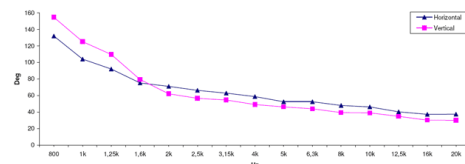
- (1) 4 π sr acoustic loading
- (2) Average value in frequency range: 1.6÷16 KHz
- (3) Average values on horizontal and vertical planes



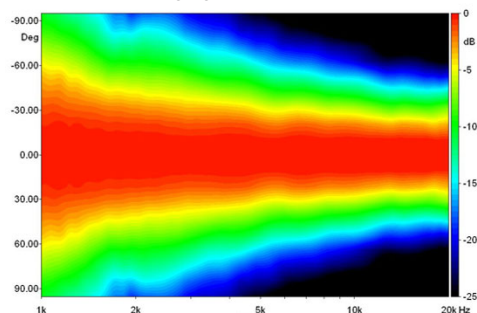
DIRECTIVITY INDEX



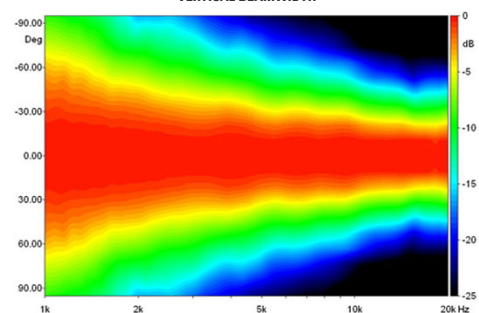
BEAMWIDTH



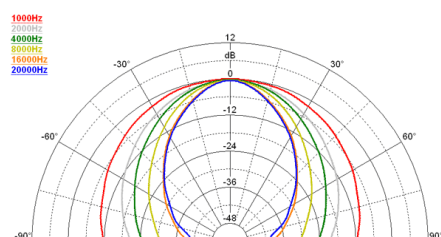
HORIZONTAL BEAMWIDTH



VERTICAL BEAMWIDTH



HORIZONTAL POLAR PATTERN



VERTICAL POLAR PATTERN

