

Technical Manual

S4700



ACOUSTIC & ELECTRICAL SPECIFICATIONS:

- Nominal impedance: 6 ohms
- Power Handling: 300 watts RMS
- Frequency response: 38Hz – 40kHz (–6dB)
- Sensitivity: 94dB (2.83V/1m)
- Crossover frequencies: 800Hz, 12kHz

SYSTEM COMPONENTS:

- Cabinet: 060-0580-001
- Front Grille: 130-0119-001
- Low-frequency transducer: 15" (380mm) 2216Nd
- High-frequency transducer: 1 3/4" (45mm) 175Nd-3
- UHF transducer: 3/4" (19mm) 138Nd
- HF/UHF Crossover network: 400-0376-001
- LF Crossover network: 400-0376-002

AURAL SWEEP TEST SPECIFICATIONS:

- System Aural Sweep Test : 6.0V Input 20Hz to 20kHz
- L.F. Aural Sweep Test: 5.0V Input 20Hz to 1kHz
- H.F. Aural Sweep Test: 0.5V Input 300Hz to 10kHz
- U.H.F. Aural Sweep Test: 0.5V Input 5kHz to 10kHz

PHYSICAL SPECIFICATIONS:

- Dimensions (W x H x D): 1075mm x 476mm x 372mm
(42-3/8" x 18-3/4" x 14-5/8")
- Weight: 54.5kg (120 lb)

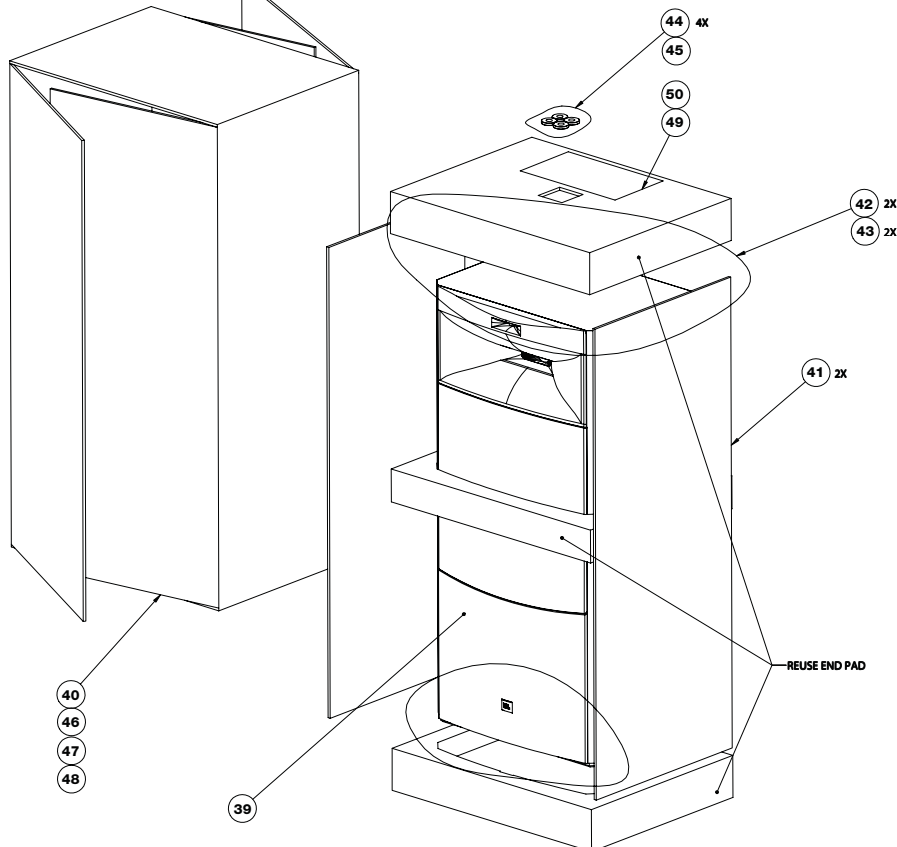
WARRANTY:

- Refer to the warranty statement packed with the product.

* The maximum recommended amplifier power rating will ensure proper system headroom to allow for occasional peaks. We do not recommend sustained operation at these maximum power levels.

PACKAGING

Legend on Page 3



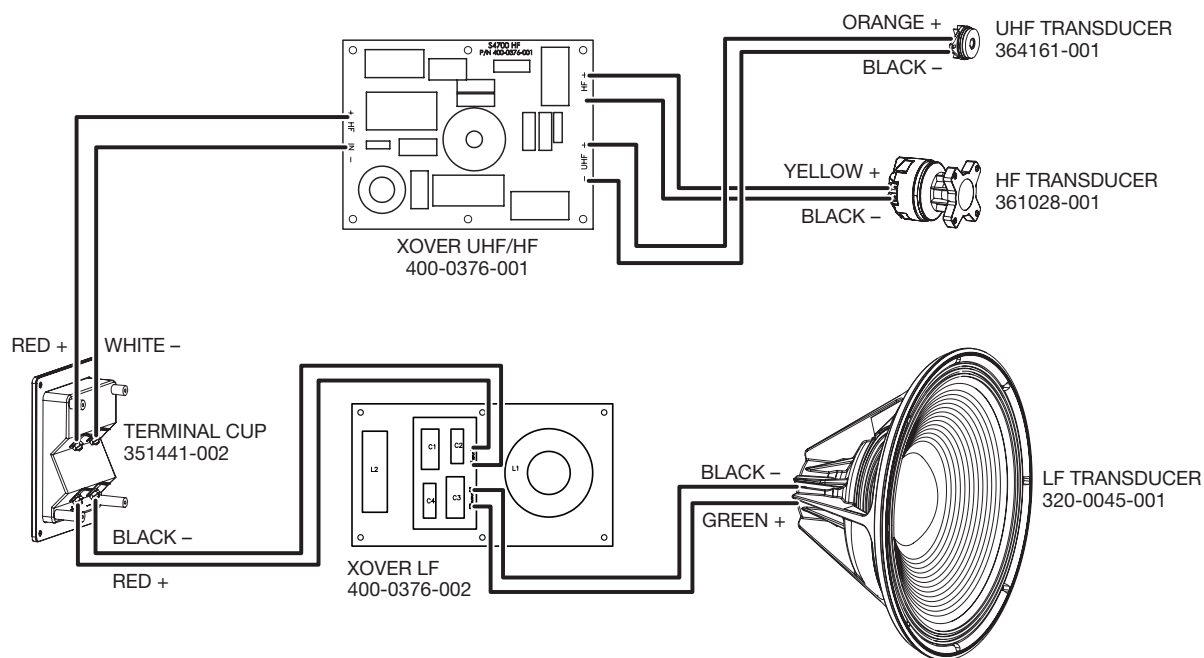
S4700

Technical Manual

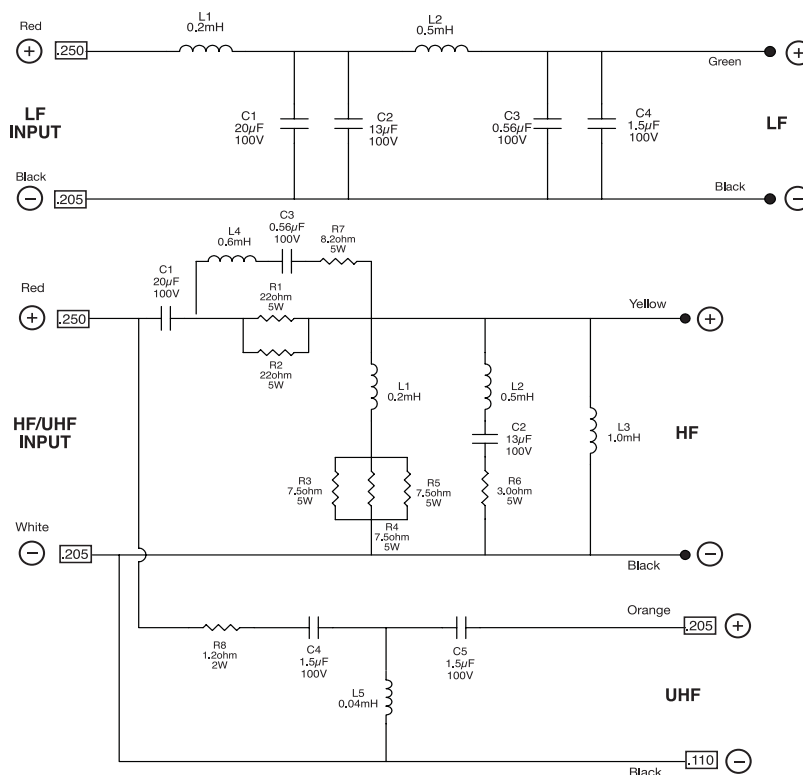
S4700



S4700 WIRING DIAGRAM



S4700 SCHEMATIC



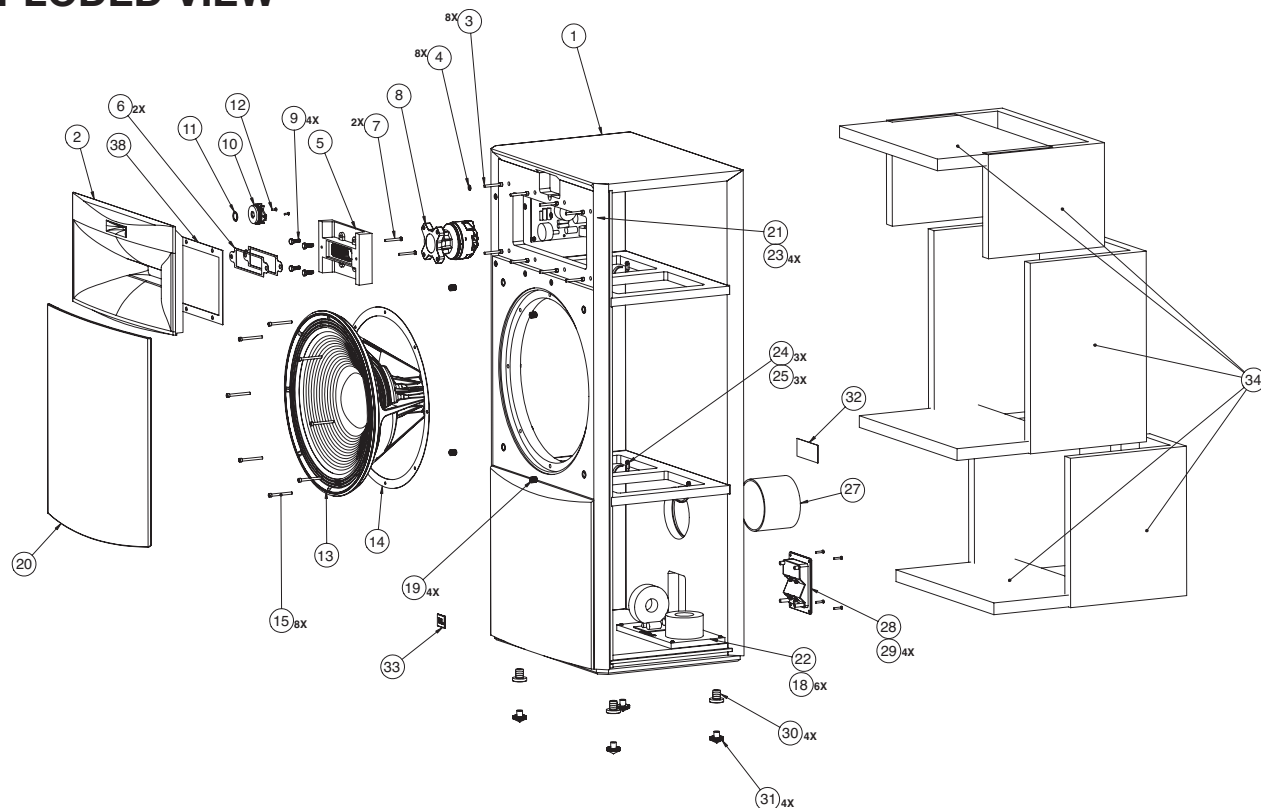
S4700

Technical Manual

S4700



EXPLODED VIEW



| ITEM NO. | PART NO. | DESCRIPTION | QTY. | ITEM NO. | PART NO. | DESCRIPTION | QTY. |
|----------|--------------|---------------------------------------------------------|------|----------|--------------|------------------------------------------------|------|
| 1 | 060-0580-001 | ASY, CAB-S4700 | 1 | 27 | 47909-78 | PTB, CRDBD, 4 3/8 X 4 1/8 X 1/8 X 3 3/8, S4700 | 1 |
| 2 | 111-0006-002 | HORN, UHF/HF, PNTD-S4700 | 1 | 28 | 351441-002 | CUP, TERM-ARRAY | 1 |
| 3 | 804-73114-24 | SCR, 10-32 X 1 1/2, SKT, HEX, AL-2000 BLK | 8 | 29 | 882-51110-12 | SCREW, 6 X 3/4, OV, PH, PTCL, BLK ZC, LCS | 4 |
| 4 | 843-90003-00 | WASHER #10 | 8 | 30 | 340805-004 | FT, NUT, INSERT, BLK | 4 |
| 5 | 339092-002 | HORN, HF, REAR, PAINTED, K2S5800 | 1 | 31 | 340805-005 | FT, SPIKE, BLK | 4 |
| 6 | 339702-001 | GSKT, HORN, THROAT, HF-4348 | 2 | 32 | 085-0364-001 | FOILCAL-S4700 | 1 |
| 7 | 804-41110-24 | SCREW, 10-32 X 1 1/2, PAN, PH, BACK ZINC, LCS | 2 | 33 | 365021-001 | LOGO, AL, JBL-TS SERIES | 1 |
| 8 | 361028-001 | ASY, XDCR-175ND-3 | 1 | 34 | 22389P | FIBERGLASS, 1 X 72", ROLL | 12 |
| 9 | 854-00000-12 | BOLT, 1/4-20 X 3/4, HEX,TAP, CLR ZC, LCS | 4 | 38 | 850-0469-001 | GSKT, HORN-S4700 | 1 |
| 10 | 364161-001 | TWEETER, UHF, 138ND | 1 | 39 | 060-0579-001 | ASY, SPKR-S4700 | 1 |
| 11 | 339976-001 | GASKET, UHF, K25800 | 1 | 40 | 900-0741-001 | CTN, MSTR-S4700 | 1 |
| 12 | 802-41040-08 | SCREW, 6-32 X 1/2, PAN HEAD, PHILLIPS, BLACK OXIDE, LCS | 2 | 41 | 900-0760-001 | FILLER, CARDBOARD-S4700 | 2 |
| 13 | 320-0045-001 | ASY, WFR-2216ND | 1 | 42 | 49790P | MICROFOAM, .062THK, 20" X 18" SHEETS | 2 |
| 14 | 338073-001 | GASKET, DRIVER, 15", K2S9800 | 1 | 43 | 72298 | FABRIC, 24" X 36", POLYESTER FIBER CLOTH | 2 |
| 15 | 804-73114-32 | SCREW, 10-32 X 2, SKT, HEX, AL-2000, BLACK | 8 | 44 | 340805-006 | FT, PL, BASE, BLK | 4 |
| 18 | 883-41110-20 | SCR, 8 X 1.25", PAN, PH, PB, BLK ZINC, LCS | 6 | 45 | 9551108-001 | BAG, PLASTC, 4X4" | 1 |
| 19 | 333249-001 | CUP, GRILLE, HLS/STUDIO II SERIES | 4 | 46 | 65012 | TAPE, 3", CLEAR | 20 |
| 20 | 130-0119-001 | ASY GRILLE-S4700 | 1 | 47 | 354868-001 | DESICCANT, 8 UNIT | 3 |
| 21 | 400-0376-001 | XOVER, UHF/HF-S4700 | 1 | 48 | 303611-2066 | BARCODE LABEL, S4700 | 1 |
| 22 | 400-0376-002 | XOVER, LF-S4700 | 1 | 49 | 950-0393-001 | MNL, OWNERS-S4700 | 1 |
| 23 | 883-41110-12 | SCR, 8 X 3/4, PAN, PH, PB, BLK ZINC, LCS | 4 | 50 | 340805-005 | FT, SPIKE, BLK | 4 |
| 24 | 75439 | TIE WRAP, RTM-675 | 3 | | | | |
| 25 | 883-41110-08 | SCREW, 8 X 1/2, PAN, PH, PB, BLK ZINC, LCS | 3 | | | | |

HARMAN

HARMAN International Industries, Incorporated.
8500 Balboa Blvd., Northridge, CA 91329 USA

© 2012 HARMAN International Industries, Incorporated. All rights reserved. JBL is a trademark of HARMAN International Industries, Incorporated, registered in the United States and/or other countries.

Features, specifications and appearances are subject to change without notice.

Part No. 950-XXXX-001 Rev. A

S4700